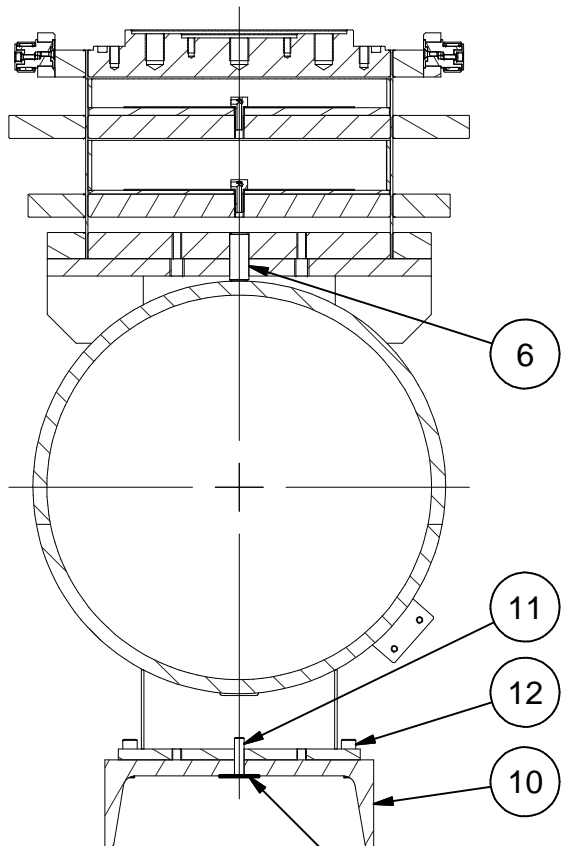
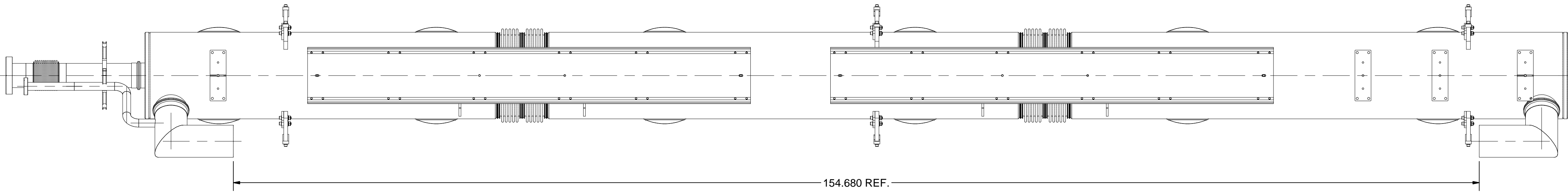
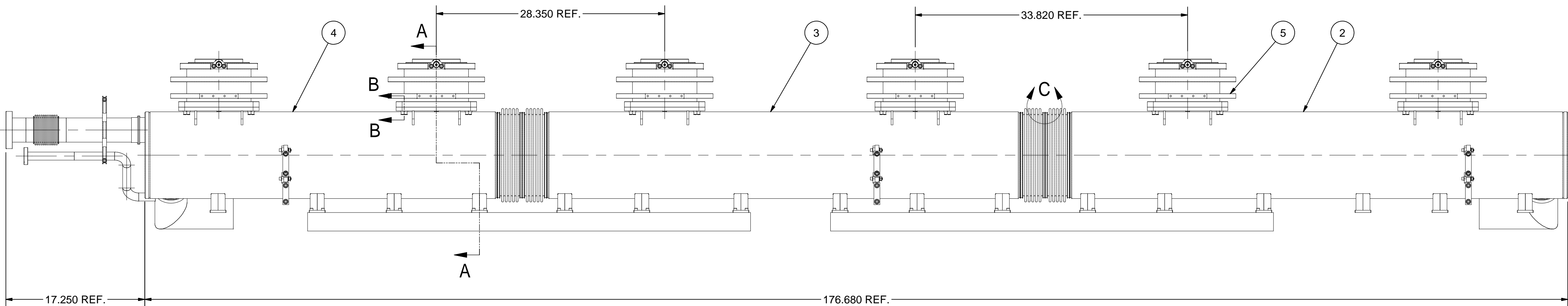
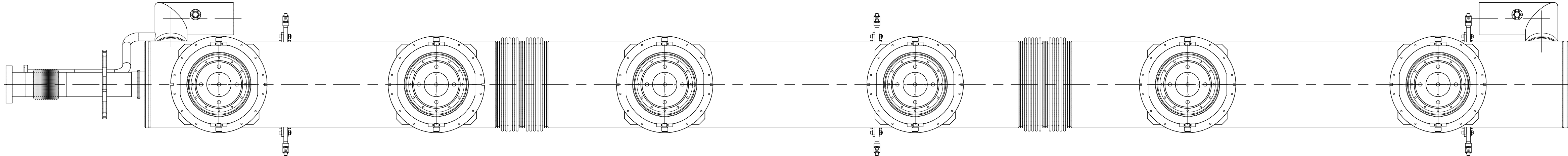
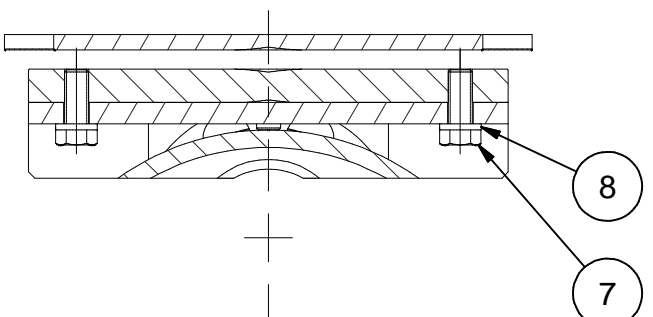


REVISIONS			
SYM.	ZONE	DESCRIPTION	DATE APP.

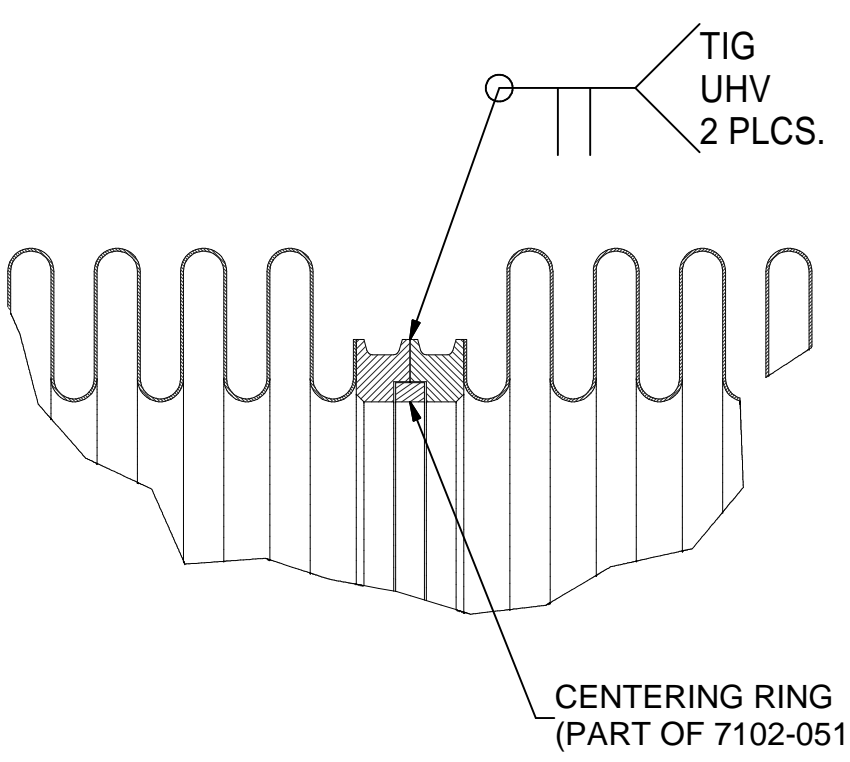


SECTION A-A
SCALE 1:5

USE ADHESIVE TAPE
TO SECURE PINS
(FROM FALLING DOWN)




SECTION B-B
SCALE 1:4



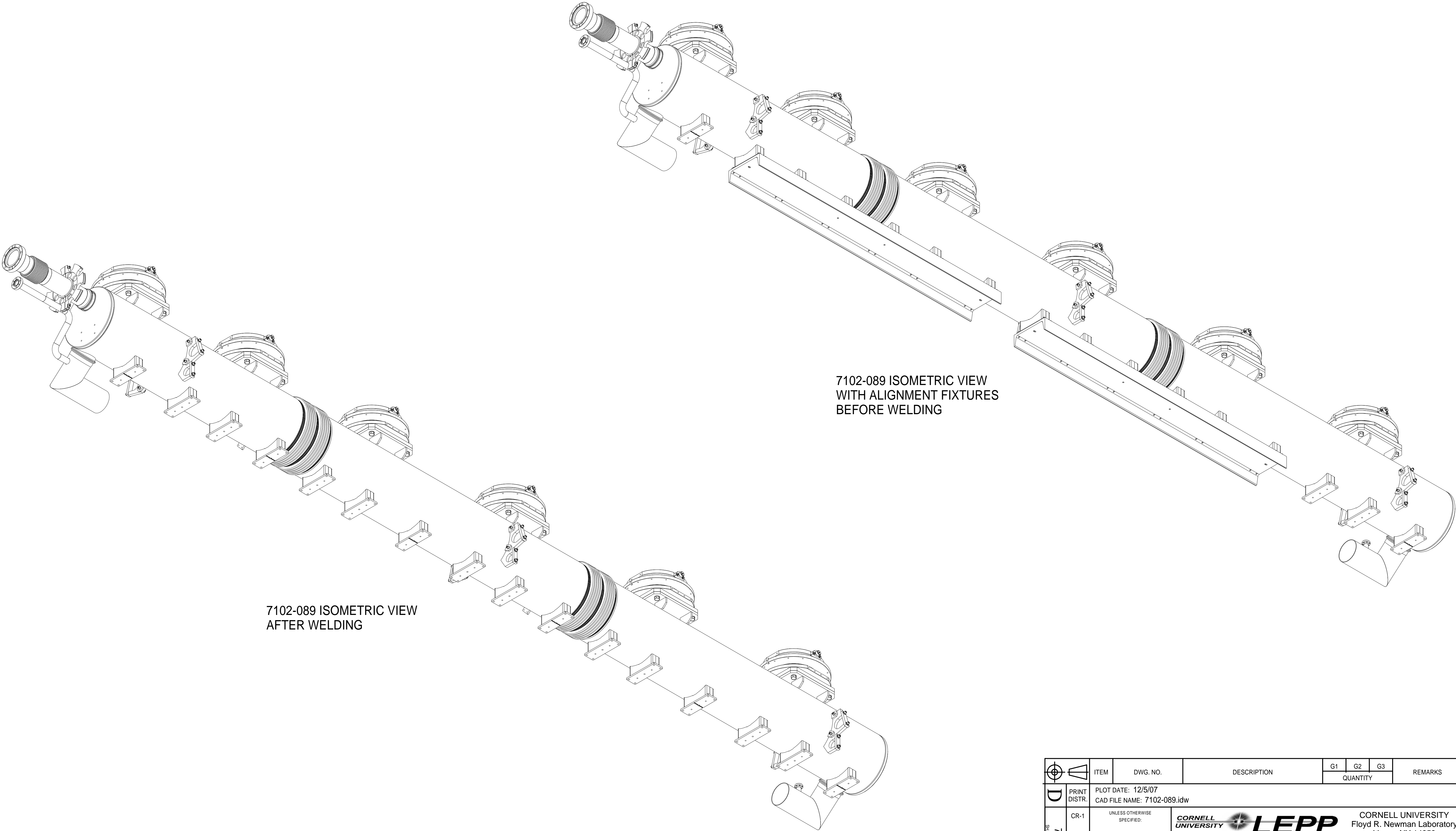
DETAIL C
SCALE 1:1

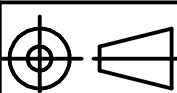
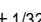

- 1 ASSEMBLY, STEP 0**
- FILE NAME: 7102-089
SHEET NO.: 1
DFT. SCALE: 1:8
MATERIAL:
QTY: 1 PER CRYOMODULE
NOTES: 1. PLACE HGRPs 2, 3, 4 ASSEMBLED WITH POSTS 5 ON COLDMASS ASSEMBLY FIXTURE. DON'T FIX THEM.
2. INSTALL CHANNELS 10. START WELDING BELLOWS.
3. FIX PARTS 2, 3, 4, 5 ON ASSEMBLY FIXTURE.
4. REMOVE CHANNELS 10. FINISH WELDING.

12	Purchased	1/4-20 x 3/4 Socket Head Cap Screw, SS	48		McMaster-Carr's 92196A540	
11	Purchased	1/4 x 1 Dowel Pin, SS	8		McMaster-Carr's 90145A542	
10	7102-089 (Sh.3)	FIXTURE CHANNEL	2			
8	Purchased	1/2 Spring Washer, 316 SS	24		McMaster-Carr's 92147A033	
7	Purchased	1/2-13 x 1-1/4 Hex Head Cap Screw, 316 SS, Diconited	24		McMaster-Carr's 93190A714	
6	7102-089 (Sh.3)	TOP PIN	6			
5	7110-001	8" POST SUPPORT	6			
4	7102-052	HGRP Beam Exit Section	1			
3	7102-051	HGRP Middle Section	1			
2	7102-050	HGRP Beam Entrance Section	1			
1	7102-089 (Sh.1)	ASSEMBLY, STEP 0	X			

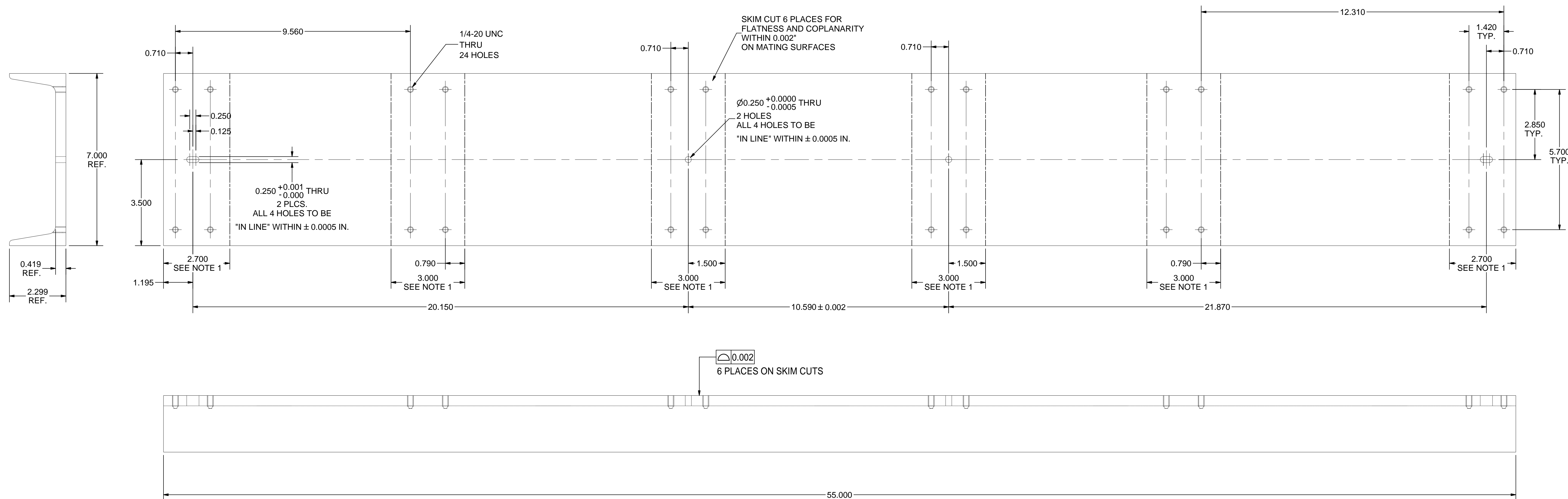
	ITEM	DWG. NO.	DESCRIPTION			G1	G2	G3	REMARKS	REV.
							QUANTITY			
D	PRINT DISTR.	PLOT DATE: 12/5/2007 CAD FILE NAME: 7102-089.idw								
	CR-1	UNLESS OTHERWISE SPECIFIED:		 CORNELL UNIVERSITY LABORATORY FOR ELEMENTARY-PARTICLE PHYSICS			CORNELL UNIVERSITY Floyd R. Newman Laboratory Ithaca, NY 14853			
		DIMENSIONS ARE IN INCHES:								
		TOLERANCES ON:								
		.0 ± .02 .00 ± .010 .000 ± .005 FRACTIONS ± 1/32 ANGLES ± 0.5° ALL SURFACES ✓								
ERL INJECTOR CRYOMODULE ASSEMBLY, STEP 0										
ASSEMBLY, STEP 0; ORTHO VIEWS, SECTIONS										
7102-089 SH. NO. 1 OF 3	CHECKED BY: VM	DRAWN BY vm	DRAWN FOR M.Liepe	DATE 9/18/07	SCALE	D	7102-089 SH. NO. 1 OF 3	REV.		
	APPROVED BY: VM									

REVISIONS			
SYM.	ZONE	DESCRIPTION	DATE APP.



	ITEM	DWG. NO.	DESCRIPTION			G1	G2	G3	REMARKS	REV.
	QUANTITY									
D	PRINT DISTR.	PLOT DATE: 12/5/07 CAD FILE NAME: 7102-089.idw								
	7102-089 SH. NO. 2 OF 3	CR-1	UNLESS OTHERWISE SPECIFIED: DIMENSIONS ARE IN INCHES: TOLERANCES ON: .0 ± .02 .00 ± .010 .000 ± .005 FRACTIONS ± 1/32 ANGLES ± 0.5° ALL SURFACES 	<div><div><div>CORNELL UNIVERSITY Floyd R. Newman Laboratory Ithaca, NY 14853</div></div><div>ERL INJECTOR CRYOMODULE ASSEMBLY, STEP 0 ASSEMBLY, STEP 0; ISOMETRIC VIEWS</div></div>						
REV.	CHECKED BY: VM APPROVED BY: VM		DRAWN BY vm	DRAWN FOR M.Liepe	DATE 9/18/07	SCALE	D	7102-089 SH. NO. 2 OF 3	REV.	

REVISIONS				
SYM.	ZONE	DESCRIPTION	DATE	APP.

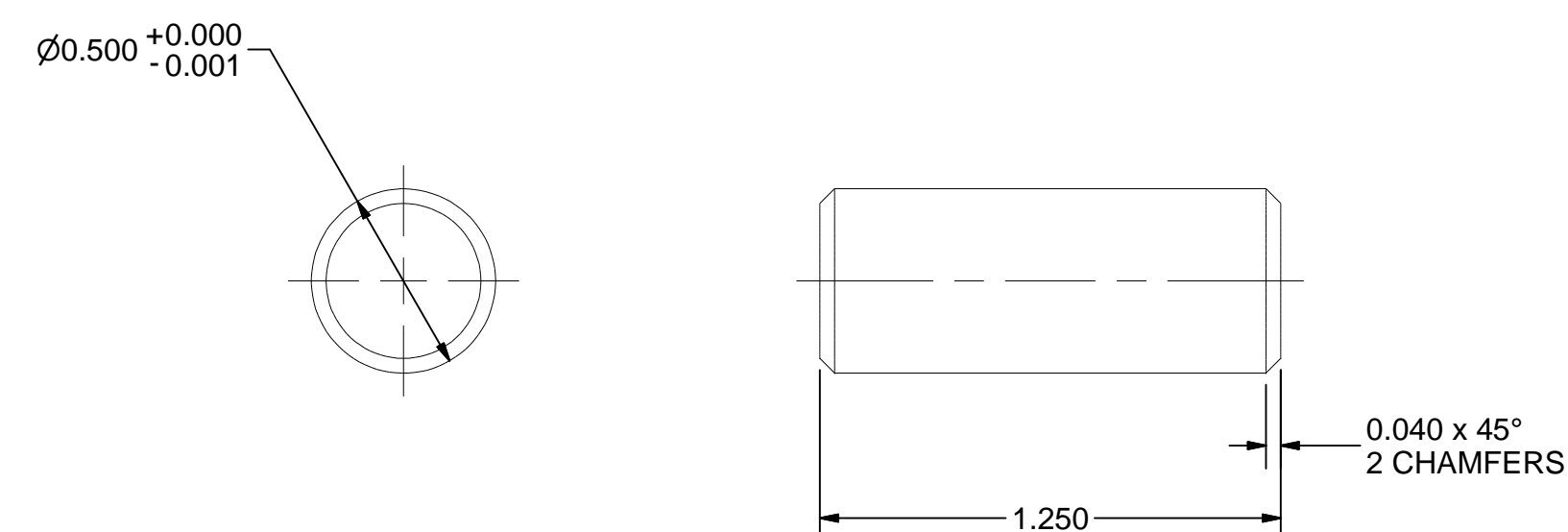





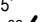


10 — FIXTURE CHANNEL

FILE NAME: 7102-089
SHEET NO.: 3
DFT. SCALE: 1:2
MATERIAL: 7" x 2.299" x 0.419" 6061-T6 ALUMINUM CHANNEL
QTY: 2 PER ASSEMBLY
NOTES: 1. SKIM CUT REGIONS (6 PLACES).

6 TOP PIN
FILE NAME

FILE NAME: 7102-089
SHEET NO.: 3
DFT. SCALE: 2:1
MATERIAL: 316 STAINLESS STEEL
QTY: 6 PER ASSEMBLY
NOTES:



 	ITEM	DWG. NO.	DESCRIPTION	G1	G2	G3	REMARKS	REV.
				QUANTITY				
 SH. NO. 3 OF 3	PRINT DISTR.	PLOT DATE: 12/5/2007 CAD FILE NAME: 7102-089.idw						
	CR-1	<div>UNLESS OTHERWISE SPECIFIED:</div> <div>DIMENSIONS ARE IN INCHES:</div> <div>TOLERANCES ON:</div> <div>.0 ± .02</div> <div>.00 ± .010</div> <div>.000 ± .005</div> <div>FRACTIONS ± 1/32</div> <div>ANGLES ± 0.5°</div> <div>ALL SURFACES </div>			<div> CORNELL UNIVERSITY Floyd R. Newman Laboratory Ithaca, NY 14853</div> <div>ERL INJECTOR CRYOMODULE ASSEMBLY, STEP 0 FIXTURE CHANNEL; TOP PIN</div>			
REV.	CHECKED BY: VM APPROVED BY: VM	DRAWN BY vm	DRAWN FOR M.Liepe	DATE 9/18/07	SCALE		7102-089 SH. NO. 3 OF 3	REV.